

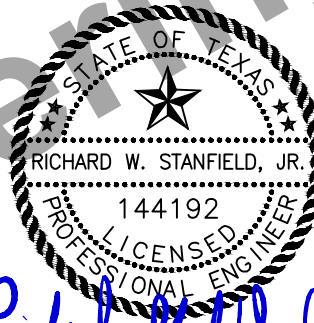
BID TABULATION FOR:

CONSTRUCTION OF THE WATER, SANITARY SEWER & DRAINAGE FACILITIES, PAVING AND APPURTENANCES TO SERVE SOUTH WEST COMMERCIAL SITES AT SIENNA PARKWAY AT WATERS LAKE BOULEVARD
SIENNA MUNICIPAL UTILITY DISTRICT NO. 5
CITY OF MISSOURI CITY, FORT BEND COUNTY, TEXAS
AUGUST 29, 2024
LJA ENGINEERING, INC.
AVIGAIL AMIGLEO
AUGUST 29, 2024
1415-2204P (9.2)

BID OPENING DATE:
BID OPENING LOCATION:
TABULATION BY:
TABULATION DATE:
LJA JOB NO.

BIDDER'S NAME	TOTAL AMOUNT BID	BID INCLUDING ALTERNATE BID NO. 1 - WS&D FIELD CONDITIONS ITEMS	BID INCLUDING ALTERNATE BID NO. 2 - PAVING ITEMS (SIENNA MUD NO. 5)	BID INCLUDING ALTERNATE BID NO. 3 - PAVING FIELD CONDITIONS ITEMS (SIENNA MUD NO. 5)
1) CROSTEX CONSTRUCTION INC.	\$693,768.00	\$735,000.00	\$1,074,768.00	\$770,625.00
2) R CONSTRUCTION CIVIL, LLC	\$844,653.50	\$885,885.50	\$1,229,273.90	\$872,601.50
3) ISJ UNDERGROUND UTILITIES	\$1,020,160.00	\$1,072,200.00	\$1,431,480.00	\$1,078,385.00
4) TLC CONSTRUCTION CONTRACT SERVICES, INC.	\$1,062,834.62	\$1,136,474.62	\$1,431,542.62	\$131,244,618.62

CALENDAR DAYS 50/60



Richard Stanfield Jr.

Richard Stanfield Jr.
9/4/2024

I, Richard Stanfield, PE, hereby certify these bid tabulations to be true and correct.

LJA Engineering, Inc.

BID TABULATION FOR:

BID OPENING DATE:
BID OPENING LOCATION:
TABULATION BY:
TABULATION DATE:
LJA JOB NO.

CONSTRUCTION OF THE WATER, SANITARY SEWER & DRAINAGE FACILITIES, PAVING AND APPURTENANCES TO SERVE SOUTH WEST COMMERCIAL SITES AT SIENNA PARKWAY AT WATERS LAKE BOULEVARD SIENNA MUNICIPAL UTILITY DISTRICT NO. 5 CITY OF MISSOURI CITY, FORT BEND COUNTY, TEXAS
 AUGUST 29, 2024
 LJA ENGINEERING, INC.
 AVIGAIL AMIGLEO
 AUGUST 29, 2024
 1415-2204P (9.2)

ITEM	DESCRIPTION	UNIT	QTY	1) CROSTEX CONSTRUCTION INC.		2) R CONSTRUCTION CIVIL, LLC		3) ISJ UNDERGROUND UTILITIES	
				UNIT COST	TOTAL COST	UNIT COST	TOTAL COST	UNIT COST	TOTAL COST
WATER DISTRIBUTION SYSTEM ITEMS - INTERNAL									
1	METHOD "A" CONSTRUCTION STAKING BY THE CONTRACTOR PER GENE BAKER, GBI PARTNERS, LP, 281.499.4539, COMPLETE IN PLACE	LS	1	\$4,600.00	\$4,600.00	\$4,033.00	\$4,033.00	\$4,033.00	\$4,033.00
2	8" PVC WATER LINE, C-900, DR 18, CL 235, ALL DEPTHS, COMPLETE IN PLACE	LF	1185	\$34.00	\$40,290.00	\$60.00	\$71,100.00	\$65.50	\$77,617.50
3	8" PVC WATER LINE C-900, DR 14, CLASS 305, RESTRAINED JOINT, INCLUDES FITTINGS, BEDDING AND BACKFILL, ALL DEPTHS, COMPLETE IN PLACE	LF	10	\$120.00	\$1,200.00	\$420.00	\$4,200.00	\$158.50	\$1,585.00
4	8" AWWA GATE VALVE AND BOX, COMPLETE IN PLACE	EA	9	\$1,900.00	\$17,100.00	\$2,500.00	\$22,500.00	\$3,545.50	\$31,909.50
5	FLUSHING VALVE UNIT, ALL DEPTHS, INCLUDES APPROPRIATE TEE, 6" GATE VALVE & BOX, 6" LEAD, FLUSHING VALVE AND TRENCH SAFETY, COMPLETE IN PLACE	EA	4	\$7,000.00	\$28,000.00	\$8,200.00	\$32,800.00	\$10,547.00	\$42,188.00
6	CAST IRON FITTINGS, COMPLETE IN PLACE	TON	0.49	\$6,500.00	\$3,185.00	\$7,550.00	\$3,699.50	\$1,000.00	\$490.00
7	TRENCH SAFETY SYSTEM, ALL DEPTHS, COMPLETE IN PLACE	LF	1185	\$0.05	\$59.25	\$0.10	\$118.50	\$0.10	\$118.50
8	8" PLUG & CLAMP, COMPLETE IN PLACE	EA	3	\$225.00	\$675.00	\$250.00	\$750.00	\$150.00	\$450.00
9	2" BLOW OFF VALVE & BOX ASSEMBLY, COMPLETE IN PLACE	EA	3	\$510.00	\$1,530.00	\$600.00	\$1,800.00	\$1,884.50	\$5,653.50
10	20"X8" TAPPING SLEEVE AND VALVE, AND BOX, COMPLETE IN PLACE	EA	1	\$9,500.00	\$9,500.00	\$9,500.00	\$9,500.00	\$9,155.50	\$9,155.50
11	12"X8" TAPPING SLEEVE AND VALVE, AND BOX, COMPLETE IN PLACE	EA	1	\$6,500.00	\$6,500.00	\$6,500.00	\$6,500.00	\$6,379.50	\$6,379.50
12	16" PVC ENCASEMENT FOR 8" WATERLINE, EXCLUDES CARRIER PIPE, ALL DEPTHS, COMPLETE IN PLACE	LF	102	\$120.00	\$12,240.00	\$115.00	\$11,730.00	\$271.50	\$27,693.00
13	BORE AND JACK OR AUGER (WET BORE) OF 16" PVC CASING FOR 8" WATERLINE, ALL DEPTHS, ALL SIZES, EXCLUDES LINE PIPE, (TO BE USED ONLY AT THE DIRECTION OF THE ENGINEER), COMPLETE IN PLACE	LF	101	\$50.00	\$5,050.00	\$285.00	\$28,785.00	\$61.50	\$6,211.50
14	BORE PITS FOR WATER LINE BORE, INCLUDES BORE PIT, DEWATERING OF BORE PIT, TRENCH SAFETY FOR BORE PIT, AND FILLED WITH 95% STANDARD PROCTOR DENSITY, COMPLETE IN PLACE	EA	4	\$250.00	\$1,000.00	\$1.00	\$4.00	\$8,000.00	\$32,000.00
WATER DISTRIBUTION SYSTEM ITEMS - INTERNAL SUBTOTAL:					\$130,929.25		\$197,520.00		\$245,484.50
SANITARY SEWER SYSTEM ITEMS - INTERNAL									
1	8" PVC SEWER PIPE, ASTM D 2241, SDR 26, CLASS 160, 0'-12" DEPTH, COMPLETE IN PLACE	LF	454	\$43.00	\$19,522.00	\$75.00	\$34,050.00	\$98.00	\$44,492.00
2	8" PVC SEWER PIPE, ASTM D 2241, SDR 26, CLASS 160, 12'-16" DEPTH, COMPLETE IN PLACE	LF	614	\$49.00	\$30,086.00	\$78.00	\$47,892.00	\$65.00	\$39,910.00
3	STANDARD SANITARY SEWER MANHOLE, (0'-8" DEPTH), INCLUDING INFLOW PROTECTOR AND RAMNEK AT ALL JOINTS, COMPLETE IN PLACE	EA	2	\$4,800.00	\$9,600.00	\$6,000.00	\$12,000.00	\$15,500.00	\$31,000.00
4	5' DIAMETER SANITARY SEWER MANHOLE, (0'-8" DEPTH), INCLUDING INFLOW PROTECTOR AND RAMNEK AT ALL JOINTS, COMPLETE IN PLACE	EA	2	\$7,000.00	\$14,000.00	\$9,200.00	\$18,400.00	\$16,100.00	\$32,200.00
5	EXTRA VERTICAL DEPTH OF 5' DIAMETER STANDARD SANITARY SEWER MANHOLES, (OVER 8' DEPTH), COMPLETE IN PLACE	VF	16.8	\$700.00	\$11,760.00	\$730.00	\$12,264.00	\$50.00	\$840.00
6	BREAK INTO EXISTING SANITARY SEWER AND INSTALL 5' DIAMETER SANITARY SEWER MANHOLE (0'-8" DEPTH), INCLUDING INFLOW PROTECTOR AND RAMNEK AT ALL JOINTS, COMPLETE IN PLACE	EA	1	\$8,500.00	\$8,500.00	\$6,950.00	\$6,950.00	\$13,853.50	\$13,853.50
7	T.V. INSPECTION OF SANITARY SEWER LINES (TO BE USED ONLY AT THE WRITTEN DIRECTION OF THE ENGINEER), COMPLETE IN PLACE	LF	1068	\$2.00	\$2,136.00	\$2.00	\$2,136.00	\$2.00	\$2,136.00

BID TABULATION FOR:

BID OPENING DATE:
BID OPENING LOCATION:
TABULATION BY:
TABULATION DATE:
LJA JOB NO.

CONSTRUCTION OF THE WATER, SANITARY SEWER & DRAINAGE FACILITIES, PAVING AND APPURTENANCES TO SERVE SOUTH WEST COMMERCIAL SITES AT SIENNA PARKWAY AT WATERS LAKE BOULEVARD
 SIENNA MUNICIPAL UTILITY DISTRICT NO. 5
 CITY OF MISSOURI CITY, FORT BEND COUNTY, TEXAS
 AUGUST 29, 2024
 LJA ENGINEERING, INC.
 AVIGAIL AMIGLEO
 AUGUST 29, 2024
 1415-2204P (9.2)

ITEM	DESCRIPTION	UNIT	QTY	1) CROSTEX CONSTRUCTION INC.		2) R CONSTRUCTION CIVIL, LLC		3) ISJ UNDERGROUND UTILITIES	
				UNIT COST	TOTAL COST	UNIT COST	TOTAL COST	UNIT COST	TOTAL COST
8	TRENCH SAFETY SYSTEM, ALL DEPTHS, COMPLETE IN PLACE	LF	945	\$0.10	\$94.50	\$0.10	\$94.50	\$0.10	\$94.50
9	FINAL ADJUSTMENTS TO SANITARY MANHOLES, COMPLETE IN PLACE	EA	5	\$200.00	\$1,000.00	\$130.00	\$650.00	\$250.00	\$1,250.00
10	EXTRA VERTICAL DEPTH OF STANDARD SANITARY SEWER MANHOLES (OVER 8' DEPTH), COMPLETE IN PLACE	VF	5.15	\$480.00	\$2,472.00	\$440.00	\$2,266.00	\$50.00	\$257.50
11	SANITARY SEWER PLUG, ALL SIZES, ALL DEPTHS, COMPLETE IN PLACE	EA	3	\$125.00	\$375.00	\$120.00	\$360.00	\$150.00	\$450.00
12	BORE AND JACK OR AUGER (DRY BORE) OF 16" STEEL CASING FOR 8" SANITARY SEWER, ALL DEPTHS, ALL SIZES, EXCLUDES LINE PIPE, (TO BE USED ONLY AT THE DIRECTION F THE ENGINEER), COMPLETE IN PLACE	LF	123	\$25.00	\$3,075.00	\$25.00	\$3,075.00	\$303.00	\$37,269.00
13	BORE PITS FOR SANITARY BORE, INCLUDES BORE PIT, DEWATERING OF BORE PIT, TRENCH SAFETY FOR BORE PIT, AND FILLED WITH 95% STANDARD PROCTOR DENSITY, COMPLETE IN PLACE	EA	2	\$200.00	\$400.00	\$200.00	\$400.00	\$200.00	\$400.00
14	16" STEEL ENCASMENT FOR 8" SANITARY SEWER, EXCLUDES CARRIER PIPE, ALL DEPTHS, COMPLETE IN PLACE	LF	123	\$200.00	\$24,600.00	\$110.00	\$13,530.00	\$90.50	\$11,131.50
15	12" PVC FORCEMAIN, AWWA C-900, DR-18, CLASS 235, COLOR GREEN, ALL DEPTHS, INCLUDES FITTINGS AND RESTRAINED JOINTS, AND ALL OTHER APPURTENANCES, COMPLETE IN PLACE	LF	50	\$75.00	\$3,750.00	\$118.00	\$5,900.00	\$67.50	\$3,375.00
16	REMOVAL OF EXISITING 12" FORCEMAIN AND CONNECT TO PROPOSED 12" FORCEMAIN LINE, ALL DEPTHS, COMPLETE IN PLACE	LF	44	\$25.00	\$1,100.00	\$34.00	\$1,496.00	\$45.00	\$1,980.00
17	CAST IRON FITTINGS, COMPLETE IN PLACE	TON	0.45	\$28,000.00	\$12,600.00	\$31,500.00	\$14,175.00	\$100.00	\$45.00
18	REMOVE AND RELOCATE EXISTING AIR RELEASE VALVE FOR SANITARY FORCE MAIN	EA	1	\$10,000.00	\$10,000.00	\$5,300.00	\$5,300.00	\$500.00	\$500.00
SANITARY SEWER SYSTEM ITEMS - INTERNAL SUBTOTAL:					\$155,070.50		\$180,938.50		\$221,184.00
DRAINAGE FACILITIES ITEMS									
1	METHOD "A" CONSTRUCTION STAKING BY THE CONTRACTOR PER GENE BAKER, GBI PARTNERS, LP, 281.499.4539, COMPLETE IN PLACE	LS	1	\$1,400.00	\$1,400.00	\$1,200.00	\$1,200.00	\$1,200.00	\$1,200.00
2	24" R.C.P. STORM SEWER, ASTM C-76, CLASS III, ALL DEPTHS, COMPLETE IN PLACE	LF	404	\$84.00	\$33,936.00	\$135.00	\$54,540.00	\$163.00	\$65,852.00
3	30" R.C.P. STORM SEWER, ASTM C-76, CLASS III, ALL DEPTHS, COMPLETE IN PLACE	LF	270	\$106.00	\$28,620.00	\$155.00	\$41,850.00	\$164.50	\$44,415.00
4	36" STORM SEWER, ASTM C-76, CLASS III, ALL DEPTHS, COMPLETE IN PLACE	LF	98	\$145.00	\$14,210.00	\$235.00	\$23,030.00	\$215.50	\$21,119.00
5	48" STORM SEWER, ASTM C-76, CLASS III, ALL DEPTHS, COMPLETE IN PLACE	LF	253	\$230.00	\$58,190.00	\$310.00	\$78,430.00	\$324.50	\$82,098.50
6	5'X3' R.C.B. STORM SEWER, ASTM C-76, CLASS III, ALL DEPTHS, COMPLETE IN PLACE	LF	237	\$425.00	\$100,725.00	\$590.00	\$139,830.00	\$775.00	\$183,675.00
7	CITY OF MISSOURI CITY (COMC) CONSTRUCTION PERMIT FOR CONSTRUCTION OF WS&D (PERCENTAGE OF WS&D CONSTRUCTION COST AS REQUIRED BY COMC), COMPLETE IN PLACE	LS	1	\$10,645.25	\$10,645.25	\$15,000.00	\$15,000.00	\$4,844.50	\$4,844.50
8	TRENCH SAFETY SYSTEM, ALL DEPTHS, COMPLETE IN PLACE	LF	1220	\$0.05	\$61.00	\$0.10	\$122.00	\$0.10	\$122.00
9	TYPE "C" MANHOLE FOR 42" STORM SEWER AND SMALLER, ALL DEPTHS, COMPLETE IN PLACE	EA	2	\$3,800.00	\$7,600.00	\$4,300.00	\$8,600.00	\$9,030.00	\$18,060.00
10	TYPE "C" MANHOLE FOR 48" STORM SEWER AND LARGER ALL DEPTHS, COMPLETE IN PLACE	EA	2	\$8,100.00	\$16,200.00	\$7,000.00	\$14,000.00	\$5,071.50	\$10,143.00

BID TABULATION FOR:

BID OPENING DATE:
BID OPENING LOCATION:
TABULATION BY:
TABULATION DATE:
LJA JOB NO.

CONSTRUCTION OF THE WATER, SANITARY SEWER & DRAINAGE FACILITIES, PAVING AND APPURTENANCES
 TO SERVE SOUTH WEST COMMERCIAL SITES AT SIENNA PARKWAY AT WATERS LAKE BOULEVARD
 SIENNA MUNICIPAL UTILITY DISTRICT NO. 5
 CITY OF MISSOURI CITY, FORT BEND COUNTY, TEXAS
 AUGUST 29, 2024
 LJA ENGINEERING, INC.
 AVIGAIL AMIGLEO
 AUGUST 29, 2024
 1415-2204P (9.2)

ITEM	DESCRIPTION	UNIT	QTY	1) CROSTEX CONSTRUCTION INC.		2) R CONSTRUCTION CIVIL, LLC		3) ISJ UNDERGROUND UTILITIES	
				UNIT COST	TOTAL COST	UNIT COST	TOTAL COST	UNIT COST	TOTAL COST
11	CONTRACTOR SHALL BREAK INTO EXISTING 24" STORM SEWER AND CONSTRUCT TYPE "C" MANHOLE FOR 42" STORM AND SMALLER, ALL DEPTHS, COMPLETE IN PLACE	EA	1	\$4,500.00	\$4,500.00	\$3,000.00	\$3,000.00	\$5,000.00	\$5,000.00
12	JUNCTION BOX WITH TYPE "C" MANHOLE TOP, ALL DEPTHS, COMPLETE IN PLACE	EA	1	\$22,000.00	\$22,000.00	\$13,000.00	\$13,000.00	\$2,000.00	\$2,000.00
13	FINAL ADJUSTMENT OF MANHOLE RIM ELEVATIONS, IN PLACE	EA	6	\$100.00	\$600.00	\$130.00	\$780.00	\$75.00	\$450.00
14	WATER, SANITARY SEWER, AND STORM SEWER UTILITY SPOIL TO BE USED ON-SITE, INCLUDES EXCAVATION, HAULING, PLACED AND COMPACTED TO 95% STANDARD PROCTOR DENSITY WITH MAXIMUM 8" LIFTS, COMPLETE IN PLACE	CY	2108	\$2.00	\$4,216.00	\$1.00	\$2,108.00	\$5.00	\$10,540.00
15	INSTALLATION AND REMOVAL OF STABILIZED CONSTRUCTION EXIT, SWMHCA SPECIFICATION NO. 4711, INCLUDES INSTALLATION AND REMOVAL (TO BE USED ONLY AS DIRECTED BY THE ENGINEER), COMPLETE IN PLACE	EA	1	\$1,500.00	\$1,500.00	\$1,500.00	\$1,500.00	\$1,500.00	\$1,500.00
16	STAGE 1 - STANDARD 10' PRECAST INLET, ALL DEPTHS (INCLUDES TEMPORARY SILT BARRIER FENCE FOR STAGE 1 INLETS), COMPLETE IN PLACE	EA	3	\$3,000.00	\$9,000.00	\$1,150.00	\$3,450.00	\$1,593.50	\$4,780.50
17	STAGE II - STANDARD 10' PRECAST INLET, ALL DEPTHS (INCLUDES TEMPORARY SAND FILLED BURLAP BAGS FOR EROSION AND SEDIMENT CONTROL), COMPLETE IN PLACE	EA	3	\$1,300.00	\$3,900.00	\$3,500.00	\$10,500.00	\$1,851.00	\$5,553.00
18	OVERFLOW DRAINAGE SWALE, 2' BOTTOM WIDTH, 3:1 SIDE SLOPES, CHANNEL LOCK OR APPROVED EQUAL, INCLUDES EXCAVATION, HAULING, GRADING AND HYDROMULCH SEEDING AS PER SWMITCA SPECIFICATION NO. 4241 (TO BE USED ONLY AS DIRECTED BY THE ENGINEER), COMPLETE IN PLACE	LF	1004	\$40.00	\$40,160.00	\$4.00	\$4,016.00	\$8.00	\$8,032.00
19	CONTRACTOR TO REMOVE AND DISPOSE OF EXISTING 10' PRECAST INLET, COMPLETE IN PLACE	EA	3	\$1,000.00	\$3,000.00	\$1,050.00	\$3,150.00	\$350.00	\$1,050.00
20	CLEAN OUT AND TOTAL DESILTING OF STORM SEWER WITHIN THE SITE UPON FINAL INSPECTION, COMPLETE IN PLACE	LF	1220	\$2.00	\$2,440.00	\$3.00	\$3,660.00	\$5.00	\$6,100.00
21	8" BRICK PLUG FOR STORM SEWER, ALL SIZES, ALL DEPTHS, COMPLETE IN PLACE	EA	3	\$250.00	\$750.00	\$800.00	\$2,400.00	\$400.00	\$1,200.00
22	COFFER DAM OR BLADDER, INCLUDES TEMPORARY BYPASS PUMPING FOR THE DURATION OF THE PROJECT, INCLUDES INSTALLATION AND REMOVAL UPON COMPLETION OF PROJECT	EA	1	\$5,000.00	\$5,000.00	\$6,800.00	\$6,800.00	\$15,000.00	\$15,000.00
23	STRIPPING OF DRAINAGE EASEMENT, INCLUDES REMOVING ALL STUMPS AND ROOTS (ONLY AREAS AS DIRECTED BY THE ENGINEER), COMPLETE IN PLACE	AC	0.48	\$3,000.00	\$1,440.00	\$5,400.00	\$2,592.00	\$20,000.00	\$9,600.00
24	54" STORM SEWER OUTFALL STRUCTURE PER COMC DETAIL, INCLUDES 2" CLAY LINER BELOW ALL SLOPE PAVING, 4:1 SET AND STAINING OF SLOPE PAVING (COLOR TO BE DETERMINED BY DEVELOPER), 2" BELOW NORMAL WATER SURFACE ELEVATION PER DETAIL, INCLUDES 4" CONCRETE SLOPE PAVING, AND REDRESSING SIDE SLOPE AFTER INSTALLATION, ALL DEPTHS, COMPLETE IN PLACE	EA	1	\$30,000.00	\$30,000.00	\$23,000.00	\$23,000.00	\$28,000.00	\$28,000.00
25	BORE AND JACK OR AUGER (WET BORE) OF 24" R.C.P. STORM SEWER ALL DEPTHS, ALL SIZES, EXCLUDES LINE PIPE (TO BE USED ONLY AT THE DIRECTION OF THE ENGINEER), COMPLETE IN PLACE	LF	41	\$175.00	\$7,175.00	\$235.00	\$9,635.00	\$77.00	\$3,157.00
26	BORE PITS FOR STORM SEWER BORE, INCLUDES BORE PIT, DEWATERING OF BORE PIT, TRENCH SAFETY FOR BORE PIT, AND FILLED WITH 95% STANDARD PROCTOR DENSITY, COMPLETE IN PLACE	EA	2	\$250.00	\$500.00	\$1.00	\$2.00	\$10,000.00	\$20,000.00

DRAINAGE FACILITIES ITEMS SUBTOTAL:

\$407,768.25

\$466,195.00

\$553,491.50

MISCELLANEOUS ITEMS

BID TABULATION FOR:

CONSTRUCTION OF THE WATER, SANITARY SEWER & DRAINAGE FACILITIES, PAVING AND APPURTENANCES TO SERVE SOUTH WEST COMMERCIAL SITES AT SIENNA PARKWAY AT WATERS LAKE BOULEVARD
 SIENNA MUNICIPAL UTILITY DISTRICT NO. 5
 CITY OF MISSOURI CITY, FORT BEND COUNTY, TEXAS
 AUGUST 29, 2024
 LJA ENGINEERING, INC.
 AVIGAIL AMIGLEO
 AUGUST 29, 2024
 1415-2204P (9.2)

BID OPENING DATE:
BID OPENING LOCATION:
TABULATION BY:
TABULATION DATE:
LJA JOB NO.

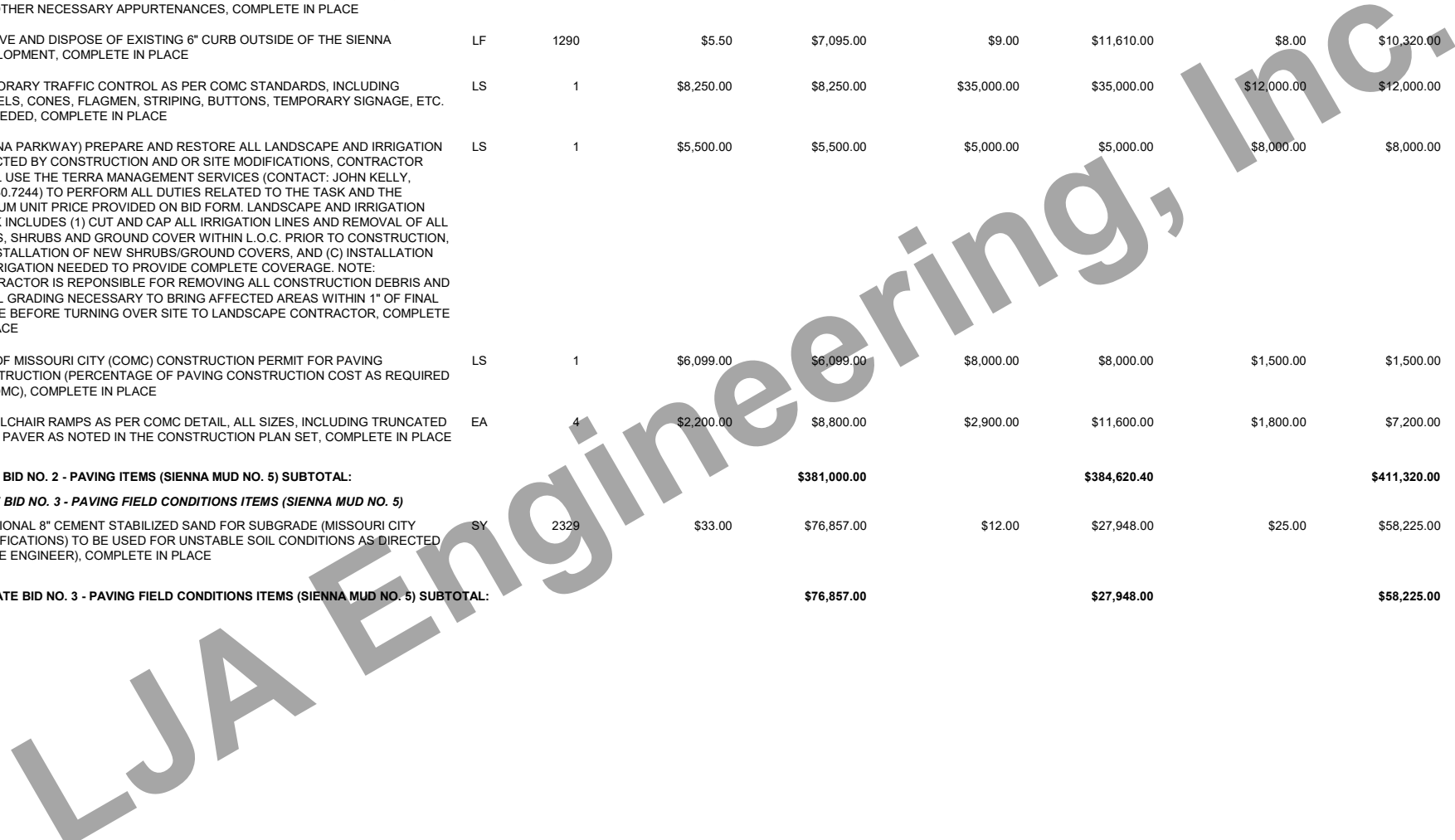
ITEM	DESCRIPTION	UNIT	QTY	1) CROSTEX CONSTRUCTION INC.		2) R CONSTRUCTION CIVIL, LLC		3) ISJ UNDERGROUND UTILITIES	
				UNIT COST	TOTAL COST	UNIT COST	TOTAL COST	UNIT COST	TOTAL COST
1	STANDARD DEDUCT FOR VARIANCE REQUESTS SUBMITTED BY THE ENGINEER ON BEHALF OF THE CONTRACTOR, (TO BE USED ONLY AS DIRECTED BY THE ENGINEER), COMPLETE IN PLACE	EA	0	-\$1,000.00	\$0.00	-\$1,000.00	\$0.00	-\$1,000.00	\$0.00
2	STANDARD DEDUCT FOR STREET CLEANING (AS DIRECTED BY THE OWNER), COMPLETE IN PLACE	HR	0	-\$125.00	\$0.00	-\$125.00	\$0.00	-\$125.00	\$0.00
3	STANDARD DEDUCT FOR DAMAGE TO WETLANDS FENCING BY THE CONTRACTOR, (AS DIRECTED BY THE ENGINEER), COMPLETE IN PLACE	LF	0	-\$10.00	\$0.00	-\$10.00	\$0.00	-\$10.00	\$0.00
4	STANDARD DEDUCT FOR DAMAGE TO TREE MARKED FOR PRESERVATION, (TO BE USED ONLY AS DIRECTED BY THE ENGINEER), COMPLETE IN PLACE	EA	0	-\$1,000.00	\$0.00	-\$1,000.00	\$0.00	-\$1,000.00	\$0.00
MISCELLANEOUS ITEMS SUBTOTAL:					\$0.00	\$0.00	\$0.00	\$0.00	\$0.00
ALTERNATE BID NO. 1 – WS&D FIELD CONDITIONS ITEMS									
1	DEWATERING OF RIGHT OF WAY (ALL DEPTHS, THIS IS AN ESTIMATED QUANTITY TO BE USED ONLY AT THE WRITTEN DIRECTION OF THE ENGINEER), COMPLETE IN PLACE	LF	600	\$20.00	\$12,000.00	\$20.00	\$12,000.00	\$30.00	\$18,000.00
2	CEMENT STABILIZED SAND (TO BE USED ONLY AS DIRECTED BY THE ENGINEER), COMPLETE IN PLACE	CY	500	\$20.00	\$10,000.00	\$20.00	\$10,000.00	\$20.00	\$10,000.00
3	ADDITIONAL COST FOR MISSOURI CITY MODIFIED "A-A" STORM SEWER BEDDING, (TO BE USED ONLY AS DIRECTED BY THE ENGINEER), COMPLETE IN PLACE	LF	588	\$16.00	\$9,408.00	\$16.00	\$9,408.00	\$20.00	\$11,760.00
4	ADDITIONAL COST FOR MISSOURI CITY MODIFIED "A-A" SANITARY SEWER BEDDING, (TO ONLY BE USED AS DIRECTED BY THE ENGINEER), COMPLETE IN PLACE	LF	614	\$16.00	\$9,824.00	\$16.00	\$9,824.00	\$20.00	\$12,280.00
ALTERNATE BID NO. 1 – WS&D FIELD CONDITIONS ITEMS SUBTOTAL:					\$41,232.00	\$41,232.00	\$41,232.00	\$52,040.00	\$52,040.00
ALTERNATE BID NO. 2 - PAVING ITEMS (SIENNA MUD NO. 5)									
1	METHOD "A" CONSTRUCTION STAKING BY THE CONTRACTOR PER GENE BAKER, GBI PARTNERS, LP, 713.995.1306, COMPLETE IN PLACE	LS	1	\$2,850.00	\$2,850.00	\$2,555.00	\$2,555.00	\$2,555.00	\$2,555.00
2	8" REINFORCED CONCRETE PAVEMENT, POURED FULL-WIDTH WHERE APPLICABLE, (MISSOURI CITY SPECIFICATIONS), COMPLETE IN PLACE	SY	1860	\$110.00	\$204,600.00	\$95.00	\$176,700.00	\$135.00	\$251,100.00
3	6" REINFORCED CONCRETE CURB, (MISSOURI CITY SPECIFICATIONS), COMPLETE IN PLACE	LF	1358	\$5.50	\$7,469.00	\$4.30	\$5,839.40	\$15.00	\$20,370.00
4	8" CEMENT STABILIZED SAND FOR SUBGRADE, (MISSOURI CITY SPECIFICATIONS), COMPLETE IN PLACE	SY	2329	\$33.00	\$76,857.00	\$15.00	\$34,935.00	\$25.00	\$58,225.00
5	COMMON ROADWAY AND LOT EXCAVATION TO BE EXCAVATED, PLACED AND COMPACTED ON SITE, INCLUDES EXCAVATION, HAULING, PLACING, AND COMPACTION TO 95% STANDARD PROCTOR DENSITY WITH MAXIMUM 8" LIFTS, COMPLETE IN PLACE	CY	200	\$33.00	\$6,600.00	\$49.00	\$9,800.00	\$25.00	\$5,000.00
6	PERMANENT TRAFFIC CONTROL DEVICES, INCLUDING TRAFFIC BUTTONS, STREET SIGNS, STOP SIGNS, PAVEMENT STRIPING, MARKER, ETC., COMPLETE IN PLACE	LS	1	\$13,200.00	\$13,200.00	\$11,500.00	\$11,500.00	\$12,000.00	\$12,000.00
7	REMOVAL OF EXISTING PAVEMENT MARKINGS, BUTTONS, ARROWS, ETC. AS PER PAVEMENT MARKING DETAILS, COMPLETE IN PLACE	LS	1	\$2,800.00	\$2,800.00	\$1.00	\$1.00	\$1,500.00	\$1,500.00
8	FORT BEND COUNTY RIGHT OF WAY PERMIT, COMPLETE IN PLACE	EA	1	\$2,500.00	\$2,500.00	\$5,000.00	\$5,000.00	\$2,200.00	\$2,200.00

BID TABULATION FOR:

CONSTRUCTION OF THE WATER, SANITARY SEWER & DRAINAGE FACILITIES, PAVING AND APPURTENANCES TO SERVE SOUTH WEST COMMERCIAL SITES AT SIENNA PARKWAY AT WATERS LAKE BOULEVARD
 SIENNA MUNICIPAL UTILITY DISTRICT NO. 5
 CITY OF MISSOURI CITY, FORT BEND COUNTY, TEXAS
 AUGUST 29, 2024
 LJA ENGINEERING, INC.
 AVIGAIL AMIGLEO
 AUGUST 29, 2024
 1415-2204P (9.2)

BID OPENING DATE:
BID OPENING LOCATION:
TABULATION BY:
TABULATION DATE:
LJA JOB NO.

ITEM	DESCRIPTION	UNIT	QTY	1) CROSTEX CONSTRUCTION INC.		2) R CONSTRUCTION CIVIL, LLC		3) ISJ UNDERGROUND UTILITIES	
				UNIT COST	TOTAL COST	UNIT COST	TOTAL COST	UNIT COST	TOTAL COST
9	CONNECT PROPOSED 8" PAVEMENT TO EXISTING 8" PAVEMENT, INCLUDING DISPOSAL OF EXISTING SUBGRADE, PAVEMENT, AND 2 FT. SAWCUT TO FULL DEPTH, DOWEL INTO EXISTING CONCRETE PAVEMENT AND UNDERCUT, AND ANY OTHER NECESSARY APPURTENANCES, COMPLETE IN PLACE	LF	1290	\$22.00	\$28,380.00	\$52.00	\$67,080.00	\$15.00	\$19,350.00
10	REMOVE AND DISPOSE OF EXISTING 6" CURB OUTSIDE OF THE SIENNA DEVELOPMENT, COMPLETE IN PLACE	LF	1290	\$5.50	\$7,095.00	\$9.00	\$11,610.00	\$8.00	\$10,320.00
11	TEMPORARY TRAFFIC CONTROL AS PER COMC STANDARDS, INCLUDING BARRELS, CONES, FLAGMEN, STRIPING, BUTTONS, TEMPORARY SIGNAGE, ETC. AS NEEDED, COMPLETE IN PLACE	LS	1	\$8,250.00	\$8,250.00	\$35,000.00	\$35,000.00	\$12,000.00	\$12,000.00
12	(SIENNA PARKWAY) PREPARE AND RESTORE ALL LANDSCAPE AND IRRIGATION AFFECTED BY CONSTRUCTION AND OR SITE MODIFICATIONS, CONTRACTOR SHALL USE THE TERRA MANAGEMENT SERVICES (CONTACT: JOHN KELLY, 281.830.7244) TO PERFORM ALL DUTIES RELATED TO THE TASK AND THE MINIMUM UNIT PRICE PROVIDED ON BID FORM. LANDSCAPE AND IRRIGATION WORK INCLUDES (1) CUT AND CAP ALL IRRIGATION LINES AND REMOVAL OF ALL TREES, SHRUBS AND GROUND COVER WITHIN L.O.C. PRIOR TO CONSTRUCTION, (B) INSTALLATION OF NEW SHRUBS/GROUND COVERS, AND (C) INSTALLATION OF IRRIGATION NEEDED TO PROVIDE COMPLETE COVERAGE. NOTE: CONTRACTOR IS REponsible FOR REMOVING ALL CONSTRUCTION DEBRIS AND INITIAL GRADING NECESSARY TO BRING AFFECTED AREAS WITHIN 1" OF FINAL GRADE BEFORE TURNING OVER SITE TO LANDSCAPE CONTRACTOR, COMPLETE IN PLACE	LS	1	\$5,500.00	\$5,500.00	\$5,000.00	\$5,000.00	\$8,000.00	\$8,000.00
13	CITY OF MISSOURI CITY (COMC) CONSTRUCTION PERMIT FOR PAVING CONSTRUCTION (PERCENTAGE OF PAVING CONSTRUCTION COST AS REQUIRED BY COMC), COMPLETE IN PLACE	LS	1	\$6,099.00	\$6,099.00	\$8,000.00	\$8,000.00	\$1,500.00	\$1,500.00
14	WHEELCHAIR RAMPS AS PER COMC DETAIL, ALL SIZES, INCLUDING TRUNCATED DOME PAVER AS NOTED IN THE CONSTRUCTION PLAN SET, COMPLETE IN PLACE	EA	4	\$2,200.00	\$8,800.00	\$2,900.00	\$11,600.00	\$1,800.00	\$7,200.00
ALTERNATE BID NO. 2 - PAVING ITEMS (SIENNA MUD NO. 5) SUBTOTAL:					\$381,000.00	\$384,620.40		\$411,320.00	
ALTERNATE BID NO. 3 - PAVING FIELD CONDITIONS ITEMS (SIENNA MUD NO. 5)									
1	ADDITIONAL 8" CEMENT STABILIZED SAND FOR SUBGRADE (MISSOURI CITY SPECIFICATIONS) TO BE USED FOR UNSTABLE SOIL CONDITIONS AS DIRECTED BY THE ENGINEER), COMPLETE IN PLACE	SY	2329	\$33.00	\$76,857.00	\$12.00	\$27,948.00	\$25.00	\$58,225.00
ALTERNATE BID NO. 3 - PAVING FIELD CONDITIONS ITEMS (SIENNA MUD NO. 5) SUBTOTAL:					\$76,857.00	\$27,948.00		\$58,225.00	

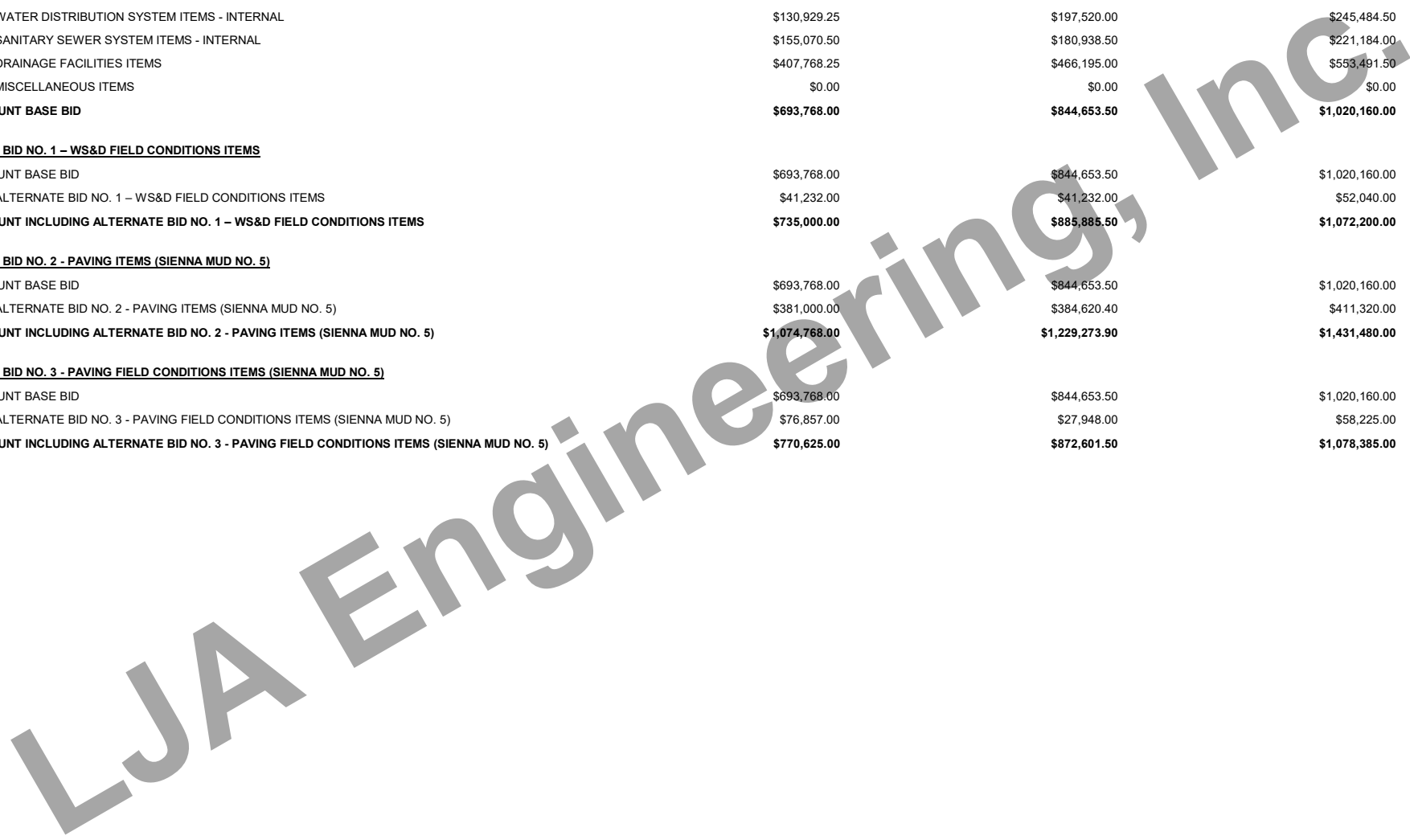


BID TABULATION FOR:

CONSTRUCTION OF THE WATER, SANITARY SEWER & DRAINAGE FACILITIES, PAVING AND APPURTENANCES
 TO SERVE SOUTH WEST COMMERCIAL SITES AT SIENNA PARKWAY AT WATERS LAKE BOULEVARD
 SIENNA MUNICIPAL UTILITY DISTRICT NO. 5
 CITY OF MISSOURI CITY, FORT BEND COUNTY, TEXAS
 AUGUST 29, 2024
 LJA ENGINEERING, INC.
 AVIGAIL AMIGLEO
 AUGUST 29, 2024
 1415-2204P (9.2)

BID OPENING DATE:
BID OPENING LOCATION:
TABULATION BY:
TABULATION DATE:
LJA JOB NO.

ITEM	DESCRIPTION	UNIT	QTY	1) CROSTEX CONSTRUCTION INC.		2) R CONSTRUCTION CIVIL, LLC		3) ISJ UNDERGROUND UTILITIES	
				UNIT COST	TOTAL COST	UNIT COST	TOTAL COST	UNIT COST	TOTAL COST
<u>BIDDING SUMMARY</u>									
	SUBTOTAL WATER DISTRIBUTION SYSTEM ITEMS - INTERNAL				\$130,929.25		\$197,520.00		\$245,484.50
	SUBTOTAL SANITARY SEWER SYSTEM ITEMS - INTERNAL				\$155,070.50		\$180,938.50		\$221,184.00
	SUBTOTAL DRAINAGE FACILITIES ITEMS				\$407,768.25		\$466,195.00		\$553,491.50
	SUBTOTAL MISCELLANEOUS ITEMS				\$0.00		\$0.00		\$0.00
	TOTAL AMOUNT BASE BID				\$693,768.00		\$844,653.50		\$1,020,160.00
<u>ALTERNATE BID NO. 1 – WS&D FIELD CONDITIONS ITEMS</u>									
	TOTAL AMOUNT BASE BID				\$693,768.00		\$844,653.50		\$1,020,160.00
	SUBTOTAL ALTERNATE BID NO. 1 – WS&D FIELD CONDITIONS ITEMS				\$41,232.00		\$41,232.00		\$52,040.00
	TOTAL AMOUNT INCLUDING ALTERNATE BID NO. 1 – WS&D FIELD CONDITIONS ITEMS				\$735,000.00		\$885,885.50		\$1,072,200.00
<u>ALTERNATE BID NO. 2 - PAVING ITEMS (SIENNA MUD NO. 5)</u>									
	TOTAL AMOUNT BASE BID				\$693,768.00		\$844,653.50		\$1,020,160.00
	SUBTOTAL ALTERNATE BID NO. 2 - PAVING ITEMS (SIENNA MUD NO. 5)				\$381,000.00		\$384,620.40		\$411,320.00
	TOTAL AMOUNT INCLUDING ALTERNATE BID NO. 2 - PAVING ITEMS (SIENNA MUD NO. 5)				\$1,074,768.00		\$1,229,273.90		\$1,431,480.00
<u>ALTERNATE BID NO. 3 - PAVING FIELD CONDITIONS ITEMS (SIENNA MUD NO. 5)</u>									
	TOTAL AMOUNT BASE BID				\$693,768.00		\$844,653.50		\$1,020,160.00
	SUBTOTAL ALTERNATE BID NO. 3 - PAVING FIELD CONDITIONS ITEMS (SIENNA MUD NO. 5)				\$76,857.00		\$27,948.00		\$58,225.00
	TOTAL AMOUNT INCLUDING ALTERNATE BID NO. 3 - PAVING FIELD CONDITIONS ITEMS (SIENNA MUD NO. 5)				\$770,625.00		\$872,601.50		\$1,078,385.00



BID TABULATION FOR:**BID OPENING DATE:****BID OPENING LOCATION:****TABULATION BY:****TABULATION DATE:****LJA JOB NO.**

CONSTRUCTION OF THE WATER, SANITARY SEWER & DRAINAGE FACILITIES, PAVING AND APPURTENANCES TO SERVE SOUTH WEST COMMERCIAL SITES AT SIENNA PARKWAY AT WATERS LAKE BOULEVARD
SIENNA MUNICIPAL UTILITY DISTRICT NO. 5
CITY OF MISSOURI CITY, FORT BEND COUNTY, TEXAS
AUGUST 29, 2024
LJA ENGINEERING, INC.
AVIGAIL AMIGLEO
AUGUST 29, 2024
1415-2204P (9.2)

4) TLC CONSTRUCTION CONTRACT SERVICES, INC.

ITEM	DESCRIPTION	UNIT	QTY	UNIT COST	TOTAL COST
WATER DISTRIBUTION SYSTEM ITEMS - INTERNAL					
1	METHOD "A" CONSTRUCTION STAKING BY THE CONTRACTOR PER GENE BAKER, GBI PARTNERS, LP, 281.499.4539, COMPLETE IN PLACE	LS	1	\$4,033.00	\$4,033.00
2	8" PVC WATER LINE, C-900, DR 18, CL 235, ALL DEPTHS, COMPLETE IN PLACE	LF	1185	\$58.00	\$68,730.00
3	8" PVC WATER LINE C-900, DR 14, CLASS 305, RESTRAINED JOINT, INCLUDES FITTINGS, BEDDING AND BACKFILL, ALL DEPTHS, COMPLETE IN PLACE	LF	10	\$161.00	\$1,610.00
4	8" AWWA GATE VALVE AND BOX, COMPLETE IN PLACE	EA	9	\$2,253.00	\$20,277.00
5	FLUSHING VALVE UNIT, ALL DEPTHS, INCLUDES APPROPRIATE TEE, 6" GATE VALVE & BOX, 6" LEAD, FLUSHING VALVE AND TRENCH SAFETY, COMPLETE IN PLACE	EA	4	\$8,370.00	\$33,480.00
6	CAST IRON FITTINGS, COMPLETE IN PLACE	TON	0.49	\$9,150.00	\$4,483.50
7	TRENCH SAFETY SYSTEM, ALL DEPTHS, COMPLETE IN PLACE	LF	1185	\$1.00	\$1,185.00
8	8" PLUG & CLAMP, COMPLETE IN PLACE	EA	3	\$381.00	\$1,143.00
9	2" BLOW OFF VALVE & BOX ASSEMBLY, COMPLETE IN PLACE	EA	3	\$920.00	\$2,760.00
10	20"X8" TAPPING SLEEVE AND VALVE, AND BOX, COMPLETE IN PLACE	EA	1	\$9,569.00	\$9,569.00
11	12"X8" TAPPING SLEEVE AND VALVE, AND BOX, COMPLETE IN PLACE	EA	1	\$6,694.00	\$6,694.00
12	16" PVC ENCASEMENT FOR 8" WATERLINE, EXCLUDES CARRIER PIPE, ALL DEPTHS, COMPLETE IN PLACE	LF	102	\$138.00	\$14,076.00
13	BORE AND JACK OR AUGER (WET BORE) OF 16" PVC CASING FOR 8" WATERLINE, ALL DEPTHS, ALL SIZES, EXCLUDES LINE PIPE, (TO BE USED ONLY AT THE DIRECTION OF THE ENGINEER), COMPLETE IN PLACE	LF	101	\$35.00	\$3,535.00
14	BORE PITS FOR WATER LINE BORE, INCLUDES BORE PIT, DEWATERING OF BORE PIT, TRENCH SAFETY FOR BORE PIT, AND FILLED WITH 95% STANDARD PROCTOR DENSITY, COMPLETE IN PLACE	EA	4	\$4,069.00	\$16,276.00
WATER DISTRIBUTION SYSTEM ITEMS - INTERNAL SUBTOTAL:					\$187,851.50
SANITARY SEWER SYSTEM ITEMS - INTERNAL					
1	8" PVC SEWER PIPE, ASTM D 2241, SDR 26, CLASS 160, 0'-12' DEPTH, COMPLETE IN PLACE	LF	454	\$73.00	\$33,142.00
2	8" PVC SEWER PIPE, ASTM D 2241, SDR 26, CLASS 160, 12'-16' DEPTH, COMPLETE IN PLACE	LF	614	\$215.00	\$132,010.00
3	STANDARD SANITARY SEWER MANHOLE, (0'-8' DEPTH), INCLUDING INFLOW PROTECTOR AND RAMNEK AT ALL JOINTS, COMPLETE IN PLACE	EA	2	\$7,413.00	\$14,826.00
4	5' DIAMETER SANITARY SEWER MANHOLE, (0'-8' DEPTH), INCLUDING INFLOW PROTECTOR AND RAMNEK AT ALL JOINTS, COMPLETE IN PLACE	EA	2	\$9,664.00	\$19,328.00
5	EXTRA VERTICAL DEPTH OF 5' DIAMETER STANDARD SANITARY SEWER MANHOLES, (OVER 8' DEPTH), COMPLETE IN PLACE	VF	16.8	\$524.00	\$8,803.20
6	BREAK INTO EXISTING SANITARY SEWER AND INSTALL 5' DIAMETER SANITARY SEWER MANHOLE (0'-8' DEPTH), INCLUDING INFLOW PROTECTOR AND RAMNEK AT ALL JOINTS, COMPLETE IN PLACE	EA	1	\$12,986.00	\$12,986.00
7	T.V. INSPECTION OF SANITARY SEWER LINES (TO BE USED ONLY AT THE WRITTEN DIRECTION OF THE ENGINEER), COMPLETE IN PLACE	LF	1068	\$3.00	\$3,204.00

BID TABULATION FOR:

BID OPENING DATE:

BID OPENING LOCATION:

TABULATION BY:

TABULATION DATE:

LJA JOB NO.

CONSTRUCTION OF THE WATER, SANITARY SEWER & DRAINAGE FACILITIES, PAVING AND APPURTENANCES TO SERVE SOUTH WEST COMMERCIAL SITES AT SIENNA PARKWAY AT WATERS LAKE BOULEVARD
SIENNA MUNICIPAL UTILITY DISTRICT NO. 5
CITY OF MISSOURI CITY, FORT BEND COUNTY, TEXAS
AUGUST 29, 2024
LJA ENGINEERING, INC.
AVIGAIL AMIGLEO
AUGUST 29, 2024
1415-2204P (9.2)

4) TLC CONSTRUCTION CONTRACT SERVICES, INC.

ITEM	DESCRIPTION	UNIT	QTY	UNIT COST	TOTAL COST
8	TRENCH SAFETY SYSTEM, ALL DEPTHS, COMPLETE IN PLACE	LF	945	\$1.00	\$945.00
9	FINAL ADJUSTMENTS TO SANITARY MANHOLES, COMPLETE IN PLACE	EA	5	\$637.00	\$3,185.00
10	EXTRA VERTICAL DEPTH OF STANDARD SANITARY SEWER MANHOLES (OVER 8' DEPTH), COMPLETE IN PLACE	VF	5.15	\$374.00	\$1,926.10
11	SANITARY SEWER PLUG, ALL SIZES, ALL DEPTHS, COMPLETE IN PLACE	EA	3	\$114.00	\$342.00
12	BORE AND JACK OR AUGER (DRY BORE) OF 16" STEEL CASING FOR 8" SANITARY SEWER, ALL DEPTHS, ALL SIZES, EXCLUDES LINE PIPE, (TO BE USED ONLY AT THE DIRECTION F THE ENGINEER), COMPLETE IN PLACE	LF	123	\$156.00	\$19,188.00
13	BORE PITS FOR SANITARY BORE, INCLUDES BORE PIT, DEWATERING OF BORE PIT, TRENCH SAFETY FOR BORE PIT, AND FILLED WITH 95% STANDARD PROCTOR DENSITY, COMPLETE IN PLACE	EA	2	\$4,069.00	\$8,138.00
14	16" STEEL ENCASMENT FOR 8" SANITARY SEWER, EXCLUDES CARRIER PIPE, ALL DEPTHS, COMPLETE IN PLACE	LF	123	\$115.00	\$14,145.00
15	12" PVC FORCEMAIN, AWWA C-900, DR-18, CLASS 235, COLOR GREEN, ALL DEPTHS, INCLUDES FITTINGS AND RESTRAINED JOINTS, AND ALL OTHER APPURTENANCES, COMPLETE IN PLACE	LF	50	\$155.00	\$7,750.00
16	REMOVAL OF EXISITING 12" FORCEMAIN AND CONNECT TO PROPOSED 12" FORCEMAIN LINE, ALL DEPTHS, COMPLETE IN PLACE	LF	44	\$49.00	\$2,156.00
17	CAST IRON FITTINGS, COMPLETE IN PLACE	TON	0.45	\$34,638.00	\$15,587.10
18	REMOVE AND RELOCATE EXISTING AIR RELEASE VALVE FOR SANITARY FORCE MAIN	EA	1	\$4,788.00	\$4,788.00

SANITARY SEWER SYSTEM ITEMS - INTERNAL SUBTOTAL:

\$302,449.40

DRAINAGE FACILITIES ITEMS

1	METHOD "A" CONSTRUCTION STAKING BY THE CONTRACTOR PER GENE BAKER, GBI PARTNERS, LP, 281.499.4539, COMPLETE IN PLACE	LS	1	\$1,200.00	\$1,200.00
2	24" R.C.P. STORM SEWER, ASTM C-76, CLASS III, ALL DEPTHS, COMPLETE IN PLACE	LF	404	\$157.00	\$63,428.00
3	30" R.C.P. STORM SEWER, ASTM C-76, CLASS III, ALL DEPTHS, COMPLETE IN PLACE	LF	270	\$210.00	\$56,700.00
4	36" STORM SEWER, ASTM C-76, CLASS III, ALL DEPTHS, COMPLETE IN PLACE	LF	98	\$297.00	\$29,106.00
5	48" STORM SEWER, ASTM C-76, CLASS III, ALL DEPTHS, COMPLETE IN PLACE	LF	253	\$386.00	\$97,658.00
6	5'X3' R.C.B. STORM SEWER, ASTM C-76, CLASS III, ALL DEPTHS, COMPLETE IN PLACE	LF	237	\$641.00	\$151,917.00
7	CITY OF MISSOURI CITY (COMC) CONSTRUCTION PERMIT FOR CONSTRUCTION OF WS&D (PERCENTAGE OF WS&D CONSTRUCTION COST AS REQUIRED BY COMC), COMPLETE IN PLACE	LS	1	\$11,270.00	\$11,270.00
8	TRENCH SAFETY SYSTEM, ALL DEPTHS, COMPLETE IN PLACE	LF	1220	\$1.00	\$1,220.00
9	TYPE "C" MANHOLE FOR 42" STORM SEWER AND SMALLER, ALL DEPTHS, COMPLETE IN PLACE	EA	2	\$12,262.00	\$24,524.00
10	TYPE "C" MANHOLE FOR 48" STORM SEWER AND LARGER ALL DEPTHS, COMPLETE IN PLACE	EA	2	\$14,284.00	\$28,568.00

BID TABULATION FOR:

BID OPENING DATE:
BID OPENING LOCATION:
TABULATION BY:
TABULATION DATE:
LJA JOB NO.

CONSTRUCTION OF THE WATER, SANITARY SEWER & DRAINAGE FACILITIES, PAVING AND APPURTENANCES TO SERVE SOUTH WEST COMMERCIAL SITES AT SIENNA PARKWAY AT WATERS LAKE BOULEVARD
SIENNA MUNICIPAL UTILITY DISTRICT NO. 5
CITY OF MISSOURI CITY, FORT BEND COUNTY, TEXAS
AUGUST 29, 2024
LJA ENGINEERING, INC.
AVIGAIL AMIGLEO
AUGUST 29, 2024
1415-2204P (9.2)
4) TLC CONSTRUCTION CONTRACT SERVICES, INC.

ITEM	DESCRIPTION	UNIT	QTY	UNIT COST	TOTAL COST
11	CONTRACTOR SHALL BREAK INTO EXISTING 24" STORM SEWER AND CONSTRUCT TYPE "C" MANHOLE FOR 42" STORM AND SMALLER, ALL DEPTHS, COMPLETE IN PLACE	EA	1	\$920.00	\$920.00
12	JUNCTION BOX WITH TYPE "C" MANHOLE TOP, ALL DEPTHS, COMPLETE IN PLACE	EA	1	\$13,478.00	\$13,478.00
13	FINAL ADJUSTMENT OF MANHOLE RIM ELEVATIONS, IN PLACE	EA	6	\$637.00	\$3,822.00
14	WATER, SANITARY SEWER, AND STORM SEWER UTILITY SPOIL TO BE USED ON-SITE, INCLUDES EXCAVATION, HAULING, PLACED AND COMPACTED TO 95% STANDARD PROCTOR DENSITY WITH MAXIMUM 8" LIFTS, COMPLETE IN PLACE	CY	2108	\$3.00	\$6,324.00
15	INSTALLATION AND REMOVAL OF STABILIZED CONSTRUCTION EXIT, SWMHCA SPECIFICATION NO. 4711, INCLUDES INSTALLATION AND REMOVAL (TO BE USED ONLY AS DIRECTED BY THE ENGINEER), COMPLETE IN PLACE	EA	1	\$4,063.00	\$4,063.00
16	STAGE I - STANDARD 10' PRECAST INLET, ALL DEPTHS (INCLUDES TEMPORARY SILT BARRIER FENCE FOR STAGE 1 INLETS), COMPLETE IN PLACE	EA	3	\$4,911.00	\$14,733.00
17	STAGE II - STANDARD 10' PRECAST INLET, ALL DEPTHS (INCLUDES TEMPORARY SAND FILLED BURLAP BAGS FOR EROSION AND SEDIMENT CONTROL), COMPLETE IN PLACE	EA	3	\$2,516.00	\$7,548.00
18	OVERFLOW DRAINAGE SWALE, 2' BOTTOM WIDTH, 3:1 SIDE SLOPES, CHANNEL LOCK OR APPROVED EQUAL, INCLUDES EXCAVATION, HAULING, GRADING AND HYDROMULCH SEEDING AS PER SWMITCA SPECIFICATION NO. 4241 (TO BE USED ONLY AS DIRECTED BY THE ENGINEER), COMPLETE IN PLACE	LF	1004	\$6.00	\$6,024.00
19	CONTRACTOR TO REMOVE AND DISPOSE OF EXISTING 10' PRECAST INLET, COMPLETE IN PLACE	EA	3	\$982.00	\$2,946.00
20	CLEAN OUT AND TOTAL DESILTING OF STORM SEWER WITHIN THE SITE UPON FINAL INSPECTION, COMPLETE IN PLACE	LF	1220	\$7.00	\$8,540.00
21	8" BRICK PLUG FOR STORM SEWER, ALL SIZES, ALL DEPTHS, COMPLETE IN PLACE	EA	3	\$525.00	\$1,575.00
22	COFFER DAM OR BLADDER, INCLUDES TEMPORARY BYPASS PUMPING FOR THE DURATION OF THE PROJECT, INCLUDES INSTALLATION AND REMOVAL UPON COMPLETION OF PROJECT	EA	1	\$10,686.00	\$10,686.00
23	STRIPPING OF DRAINAGE EASEMENT, INCLUDES REMOVING ALL STUMPS AND ROOTS (ONLY AREAS AS DIRECTED BY THE ENGINEER), COMPLETE IN PLACE	AC	0.48	\$864.00	\$414.72
24	54" STORM SEWER OUTFALL STRUCTURE PER COMC DETAIL, INCLUDES 2" CLAY LINER BELOW ALL SLOPE PAVING, 4:1 SET AND STAINING OF SLOPE PAVING (COLOR TO BE DETERMINED BY DEVELOPER), 2" BELOW NORMAL WATER SURFACE ELEVATION PER DETAIL, INCLUDES 4" CONCRETE SLOPE PAVING, AND REDRESSING SIDE SLOPE AFTER INSTALLATION, ALL DEPTHS, COMPLETE IN PLACE	EA	1	\$8,260.00	\$8,260.00
25	BORE AND JACK OR AUGER (WET BORE) OF 24" R.C.P. STORM SEWER ALL DEPTHS, ALL SIZES, EXCLUDES LINE PIPE (TO BE USED ONLY AT THE DIRECTION OF THE ENGINEER), COMPLETE IN PLACE	LF	41	\$231.00	\$9,471.00
26	BORE PITS FOR STORM SEWER BORE, INCLUDES BORE PIT, DEWATERING OF BORE PIT, TRENCH SAFETY FOR BORE PIT, AND FILLED WITH 95% STANDARD PROCTOR DENSITY, COMPLETE IN PLACE	EA	2	\$4,069.00	\$8,138.00

DRAINAGE FACILITIES ITEMS SUBTOTAL:

\$572,533.72

MISCELLANEOUS ITEMS

BID TABULATION FOR:

BID OPENING DATE:
BID OPENING LOCATION:
TABULATION BY:
TABULATION DATE:
LJA JOB NO.

CONSTRUCTION OF THE WATER, SANITARY SEWER & DRAINAGE FACILITIES, PAVING AND APPURTENANCES TO SERVE SOUTH WEST COMMERCIAL SITES AT SIENNA PARKWAY AT WATERS LAKE BOULEVARD
SIENNA MUNICIPAL UTILITY DISTRICT NO. 5
CITY OF MISSOURI CITY, FORT BEND COUNTY, TEXAS
AUGUST 29, 2024
LJA ENGINEERING, INC.
AVIGAIL AMIGLEO
AUGUST 29, 2024
1415-2204P (9.2)

4) TLC CONSTRUCTION CONTRACT SERVICES, INC.

ITEM	DESCRIPTION	UNIT	QTY	UNIT COST	TOTAL COST
1	STANDARD DEDUCT FOR VARIANCE REQUESTS SUBMITTED BY THE ENGINEER ON BEHALF OF THE CONTRACTOR, (TO BE USED ONLY AS DIRECTED BY THE ENGINEER), COMPLETE IN PLACE	EA	0	-\$1,000.00	\$0.00
2	STANDARD DEDUCT FOR STREET CLEANING (AS DIRECTED BY THE OWNER), COMPLETE IN PLACE	HR	0	-\$125.00	\$0.00
3	STANDARD DEDUCT FOR DAMAGE TO WETLANDS FENCING BY THE CONTRACTOR, (AS DIRECTED BY THE ENGINEER), COMPLETE IN PLACE	LF	0	-\$10.00	\$0.00
4	STANDARD DEDUCT FOR DAMAGE TO TREE MARKED FOR PRESERVATION, (TO BE USED ONLY AS DIRECTED BY THE ENGINEER), COMPLETE IN PLACE	EA	0	-\$1,000.00	\$0.00

MISCELLANEOUS ITEMS SUBTOTAL:

\$0.00

ALTERNATE BID NO. 1 – WS&D FIELD CONDITIONS ITEMS

1	DEWATERING OF RIGHT OF WAY (ALL DEPTHS, THIS IS AN ESTIMATED QUANTITY TO BE USED ONLY AT THE WRITTEN DIRECTION OF THE ENGINEER), COMPLETE IN PLACE	LF	600	\$31.00	\$18,600.00
2	CEMENT STABILIZED SAND (TO BE USED ONLY AS DIRECTED BY THE ENGINEER), COMPLETE IN PLACE	CY	500	\$62.00	\$31,000.00
3	ADDITIONAL COST FOR MISSOURI CITY MODIFIED "A-A" STORM SEWER BEDDING, (TO BE USED ONLY AS DIRECTED BY THE ENGINEER), COMPLETE IN PLACE	LF	588	\$20.00	\$11,760.00
4	ADDITIONAL COST FOR MISSOURI CITY MODIFIED "A-A" SANITARY SEWER BEDDING, (TO ONLY BE USED AS DIRECTED BY THE ENGINEER), COMPLETE IN PLACE	LF	614	\$20.00	\$12,280.00

ALTERNATE BID NO. 1 – WS&D FIELD CONDITIONS ITEMS SUBTOTAL:

\$73,640.00

ALTERNATE BID NO. 2 - PAVING ITEMS (SIENNA MUD NO. 5)

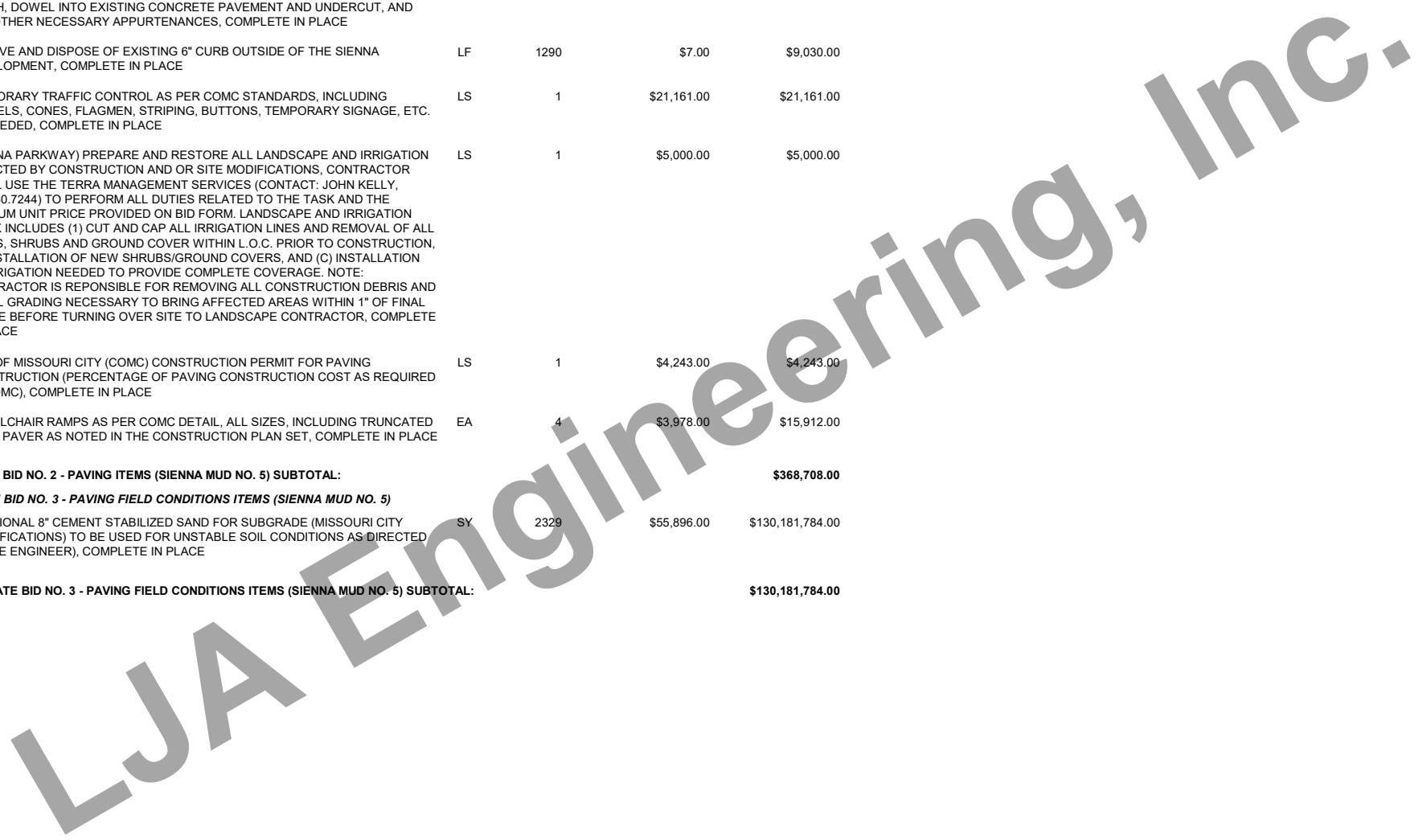
1	METHOD "A" CONSTRUCTION STAKING BY THE CONTRACTOR PER GENE BAKER, GBI PARTNERS, LP, 713.995.1306, COMPLETE IN PLACE	LS	1	\$2,555.00	\$2,555.00
2	8" REINFORCED CONCRETE PAVEMENT, POURED FULL-WIDTH WHERE APPLICABLE, (MISSOURI CITY SPECIFICATIONS), COMPLETE IN PLACE	SY	1860	\$105.00	\$195,300.00
3	6" REINFORCED CONCRETE CURB, (MISSOURI CITY SPECIFICATIONS), COMPLETE IN PLACE	LF	1358	\$7.00	\$9,506.00
4	8" CEMENT STABILIZED SAND FOR SUBGRADE, (MISSOURI CITY SPECIFICATIONS), COMPLETE IN PLACE	SY	2329	\$24.00	\$55,896.00
5	COMMON ROADWAY AND LOT EXCAVATION TO BE EXCAVATED, PLACED AND COMPACTED ON SITE, INCLUDES EXCAVATION, HAULING, PLACING, AND COMPACTION TO 95% STANDARD PROCTOR DENSITY WITH MAXIMUM 8" LIFTS, COMPLETE IN PLACE	CY	200	\$33.00	\$6,600.00
6	PERMANENT TRAFFIC CONTROL DEVICES, INCLUDING TRAFFIC BUTTONS, STREET SIGNS, STOP SIGNS, PAVEMENT STRIPING, MARKER, ETC., COMPLETE IN PLACE	LS	1	\$3,125.00	\$3,125.00
7	REMOVAL OF EXISTING PAVEMENT MARKINGS, BUTTONS, ARROWS, ETC. AS PER PAVEMENT MARKING DETAILS, COMPLETE IN PLACE	LS	1	\$4,375.00	\$4,375.00
8	FORT BEND COUNTY RIGHT OF WAY PERMIT, COMPLETE IN PLACE	EA	1	\$7,625.00	\$7,625.00

BID TABULATION FOR:

BID OPENING DATE:
BID OPENING LOCATION:
TABULATION BY:
TABULATION DATE:
LJA JOB NO.

CONSTRUCTION OF THE WATER, SANITARY SEWER & DRAINAGE FACILITIES, PAVING AND APPURTENANCES TO SERVE SOUTH WEST COMMERCIAL SITES AT SIENNA PARKWAY AT WATERS LAKE BOULEVARD
 SIENNA MUNICIPAL UTILITY DISTRICT NO. 5
 CITY OF MISSOURI CITY, FORT BEND COUNTY, TEXAS
 AUGUST 29, 2024
 LJA ENGINEERING, INC.
 AVIGAIL AMIGLEO
 AUGUST 29, 2024
 1415-2204P (9.2)
 4) TLC CONSTRUCTION CONTRACT SERVICES, INC.

ITEM	DESCRIPTION	UNIT	QTY	UNIT COST	TOTAL COST
9	CONNECT PROPOSED 8" PAVEMENT TO EXISTING 8" PAVEMENT, INCLUDING DISPOSAL OF EXISTING SUBGRADE, PAVEMENT, AND 2 FT. SAWCUT TO FULL DEPTH, DOWEL INTO EXISTING CONCRETE PAVEMENT AND UNDERCUT, AND ANY OTHER NECESSARY APPURTENANCES, COMPLETE IN PLACE	LF	1290	\$22.00	\$28,380.00
10	REMOVE AND DISPOSE OF EXISTING 6" CURB OUTSIDE OF THE SIENNA DEVELOPMENT, COMPLETE IN PLACE	LF	1290	\$7.00	\$9,030.00
11	TEMPORARY TRAFFIC CONTROL AS PER COMC STANDARDS, INCLUDING BARRELS, CONES, FLAGMEN, STRIPING, BUTTONS, TEMPORARY SIGNAGE, ETC. AS NEEDED, COMPLETE IN PLACE	LS	1	\$21,161.00	\$21,161.00
12	(SIENNA PARKWAY) PREPARE AND RESTORE ALL LANDSCAPE AND IRRIGATION AFFECTED BY CONSTRUCTION AND OR SITE MODIFICATIONS, CONTRACTOR SHALL USE THE TERRA MANAGEMENT SERVICES (CONTACT: JOHN KELLY, 281.830.7244) TO PERFORM ALL DUTIES RELATED TO THE TASK AND THE MINIMUM UNIT PRICE PROVIDED ON BID FORM. LANDSCAPE AND IRRIGATION WORK INCLUDES (1) CUT AND CAP ALL IRRIGATION LINES AND REMOVAL OF ALL TREES, SHRUBS AND GROUND COVER WITHIN L.O.C. PRIOR TO CONSTRUCTION, (B) INSTALLATION OF NEW SHRUBS/GROUND COVERS, AND (C) INSTALLATION OF IRRIGATION NEEDED TO PROVIDE COMPLETE COVERAGE. NOTE: CONTRACTOR IS REponsible FOR REMOVING ALL CONSTRUCTION DEBRIS AND INITIAL GRADING NECESSARY TO BRING AFFECTED AREAS WITHIN 1" OF FINAL GRADE BEFORE TURNING OVER SITE TO LANDSCAPE CONTRACTOR, COMPLETE IN PLACE	LS	1	\$5,000.00	\$5,000.00
13	CITY OF MISSOURI CITY (COMC) CONSTRUCTION PERMIT FOR PAVING CONSTRUCTION (PERCENTAGE OF PAVING CONSTRUCTION COST AS REQUIRED BY COMC), COMPLETE IN PLACE	LS	1	\$4,243.00	\$4,243.00
14	WHEELCHAIR RAMPS AS PER COMC DETAIL, ALL SIZES, INCLUDING TRUNCATED DOME PAVER AS NOTED IN THE CONSTRUCTION PLAN SET, COMPLETE IN PLACE	EA	4	\$3,978.00	\$15,912.00
ALTERNATE BID NO. 2 - PAVING ITEMS (SIENNA MUD NO. 5) SUBTOTAL:					\$368,708.00
ALTERNATE BID NO. 3 - PAVING FIELD CONDITIONS ITEMS (SIENNA MUD NO. 5)					
1	ADDITIONAL 8" CEMENT STABILIZED SAND FOR SUBGRADE (MISSOURI CITY SPECIFICATIONS) TO BE USED FOR UNSTABLE SOIL CONDITIONS AS DIRECTED BY THE ENGINEER), COMPLETE IN PLACE	SY	2329	\$55,896.00	\$130,181,784.00
ALTERNATE BID NO. 3 - PAVING FIELD CONDITIONS ITEMS (SIENNA MUD NO. 5) SUBTOTAL:					\$130,181,784.00



BID TABULATION FOR:

BID OPENING DATE:
BID OPENING LOCATION:
TABULATION BY:
TABULATION DATE:
LJA JOB NO.

CONSTRUCTION OF THE WATER, SANITARY SEWER & DRAINAGE FACILITIES, PAVING AND APPURTENANCES
TO SERVE SOUTH WEST COMMERCIAL SITES AT SIENNA PARKWAY AT WATERS LAKE BOULEVARD
SIENNA MUNICIPAL UTILITY DISTRICT NO. 5
CITY OF MISSOURI CITY, FORT BEND COUNTY, TEXAS
AUGUST 29, 2024
LJA ENGINEERING, INC.
AVIGAIL AMIGLEO
AUGUST 29, 2024
1415-2204P (9.2)
4) TLC CONSTRUCTION CONTRACT SERVICES, INC.

ITEM	DESCRIPTION	UNIT	QTY	UNIT COST	TOTAL COST
<u>BIDDING SUMMARY</u>					
	SUBTOTAL WATER DISTRIBUTION SYSTEM ITEMS - INTERNAL				\$187,851.50
	SUBTOTAL SANITARY SEWER SYSTEM ITEMS - INTERNAL				\$302,449.40
	SUBTOTAL DRAINAGE FACILITIES ITEMS				\$572,533.72
	SUBTOTAL MISCELLANEOUS ITEMS				\$0.00
	TOTAL AMOUNT BASE BID				\$1,062,834.62
<u>ALTERNATE BID NO. 1 – WS&D FIELD CONDITIONS ITEMS</u>					
	TOTAL AMOUNT BASE BID				\$1,062,834.62
	SUBTOTAL ALTERNATE BID NO. 1 – WS&D FIELD CONDITIONS ITEMS				\$73,640.00
	TOTAL AMOUNT INCLUDING ALTERNATE BID NO. 1 – WS&D FIELD CONDITIONS ITEMS				\$1,136,474.62
<u>ALTERNATE BID NO. 2 - PAVING ITEMS (SIENNA MUD NO. 5)</u>					
	TOTAL AMOUNT BASE BID				\$1,062,834.62
	SUBTOTAL ALTERNATE BID NO. 2 - PAVING ITEMS (SIENNA MUD NO. 5)				\$368,708.00
	TOTAL AMOUNT INCLUDING ALTERNATE BID NO. 2 - PAVING ITEMS (SIENNA MUD NO. 5)				\$1,431,542.62
<u>ALTERNATE BID NO. 3 - PAVING FIELD CONDITIONS ITEMS (SIENNA MUD NO. 5)</u>					
	TOTAL AMOUNT BASE BID				\$1,062,834.62
	SUBTOTAL ALTERNATE BID NO. 3 - PAVING FIELD CONDITIONS ITEMS (SIENNA MUD NO. 5)				\$130,181,784.00
	TOTAL AMOUNT INCLUDING ALTERNATE BID NO. 3 - PAVING FIELD CONDITIONS ITEMS (SIENNA MUD NO. 5)				\$131,244,618.62

